

[Click Here to Install Silverlight](#)

New Zealand Change | All Microsoft Sites

Microsoft

Small Business Centre

Search Microsoft.com for:

Go

Small Business Home

Contact Us | Email Newsletter

Hot Offers

Product Offers

Business Mobility

Get Genuine Windows Agreement

Training

"How to..." Guides

Small Business Templates

Training Modules

Windows Genuine

Get Genuine Windows Agreement

Windows Vista Business Service Pack 1

Why Microsoft

Business Insights

Grow Your Business ▶

Focus on Financials ▶

Increase Productivity ▶

Technology Insights ▶

Discover Server Benefits ▶

Safe & Secure Computing ▶

Security Guidance Centre ▶

Women in Business ▶

Products

Windows ▶

Office ▶

Dynamics ▶

Server Software ▶

Windows Live OneCare ▶

Tips and Tricks

Genuine Software

Events

Upcoming Features

Free Marketing Workshop

Resources

Case Studies ▶

Purchasing

Licensing

Microsoft Financing

Small Business Specialists

How To Buy

Questions for Your Reseller

[Small Business Home](#) > ["How to..." Guides](#)

Transfer Files and Settings to a New PC

Duplicating your familiar computing environment on a new PC can be a challenge, but the Files and Settings Transfer Wizard in Windows XP helps automate the process.

On This Page↓ [1. Using the wizard](#)↓ [2. What gets migrated](#)↓ [3. Migrating using removable media or storage drives](#)↓ [4. Migrating using a direct connection cable](#)

1. Using the wizard

The wizard provides options that walk you through the process of migrating to a new computer. You can:

- **Choose how to store files and settings that are migrated.** The wizard supports several methods for copying files and settings that you want to transfer. We'll examine two that don't require a network environment:
 - Using removable media or storage device
 - Using direct cable connection from your old computer to your new computer
- **Customise which files and settings get migrated.** If you already know exactly which files and settings you want to migrate, you can add or remove files directly in the wizard.

[↑ Top of page](#)

2. What gets migrated

The settings you'll migrate fall into four major groups:

- **Appearance.** This includes wallpaper, colours, sounds and the location of the taskbar.
- **Action.** This includes items such as whether double-clicking a folder opens it in a new window or the same window, and whether you need to double-click or single-click an item to open it.
- **Internet.** These are settings for connecting to the internet and controlling how your browser operates - for instance, your home page URL, favourites or bookmarks and security settings.
- **Mail.** This includes the information you need to connect to your mail server, your signature file, views, mail rules, local mail and contacts. The mail clients supported are Outlook and Outlook Express.

The wizard also can migrate specific settings for Word, Excel and other Microsoft Office programs, but the actual programs are not migrated. You will still need to re-install applications on your new computer.

Files are migrated by file type (.DOC), folder (C:\My Documents) and specific name (C:\Important\money.mny). The wizard moves many of the common file types and folders by default and gives you the option of adding or removing them.

[↑ Top of page](#)

3. Migrating using removable media or storage drives

Using the wizard is a three-step process.

Step 1: Start the wizard on your new computer

To migrate your files and settings without access to a network or cable to connect your old and new computer, first start the wizard on your new computer:

1. Click **Start, All Programs, Accessories, System Tools, Files and Settings Transfer Wizard**. When the **Welcome to the Files and Settings Transfer Wizard** page appears, click **Next**.
2. Ensure **New Computer** is selected and click **Next**.
3. In the **Do you have a Windows XP CD?** page, select **I want to create a Wizard Disk** in the following drive: and click **Next**.
4. Insert a blank and formatted 3.5 inch floppy disk into your new computer's floppy drive. The wizard creates the disk and prompts you to go to your old computer.
Note: If your new computer does not have a floppy drive (many new PCs no longer include one) then select **I will use the wizard from the Windows XP CD** option. Click **Next** and follow the instructions for using the Windows XP CD you bought or that came with your computer.

Step 2: Start the wizard on your old computer

Next, you run the wizard on your old computer to capture your settings and files. You will need designate a way to transfer the data during this step. Because 3.5 inch floppy disks have limited storage capacity, they are not a viable option for most complete settings and file transfers. You may be able to copy your settings to several floppy disks, but it will take too many floppies and too long to copy all your files. In addition, many new PCs no longer come with built-in floppy drives to read the disks.

Some better options are to copy your settings and files to:

- High-capacity removable disks such as ZIP disks
- A hard drive location where you can then burn them to a writeable CD
- A removable drive such as a high-capacity USB storage device

Remember: To transfer your settings and files, your new computer must have a drive that can read the



Quick Tips

If you're upgrading from Windows 95 or Windows 98 you can still use the Files and Settings Transfer Wizard.

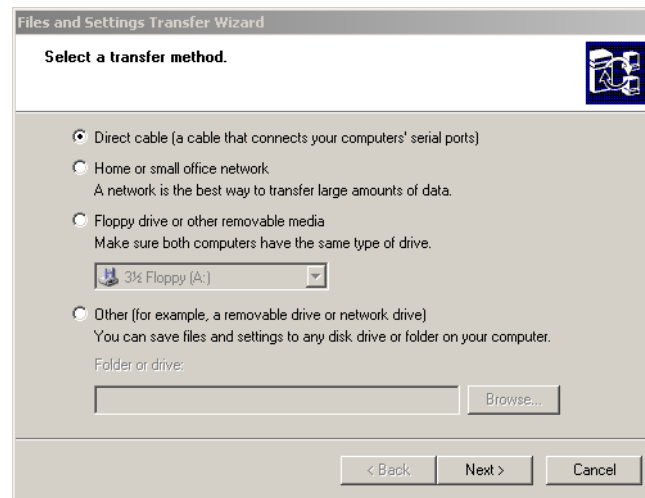
Back up your files and settings using the wizard even if you're not buying a new PC. That way you can restore configurations if you need to reinstall Windows XP.

Save passwords in your programs after you migrate the program settings. As a security feature the wizard does not migrate passwords.

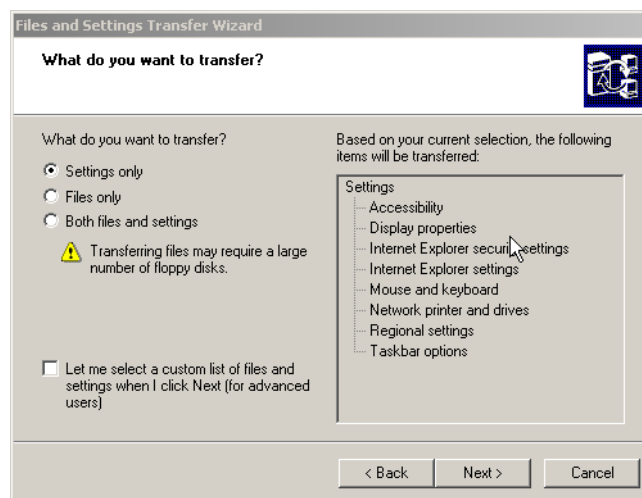
media on which the files and settings are stored.

To start the files and settings transfer:

1. Insert the wizard disk into your old computer. When the **Welcome to the Files and Settings Transfer Wizard** page appears, click **Next**.
2. In the **Which computer is this?** page, select **Old computer**. The Select a transfer method page appears as shown.



3. In the **Select a transfer method** page, select either:
 - **Floppy drive or other removable media** and click **Next**.
 - or -
 - **Other**, then **Browse** to a hard drive or removable drive location where you want to copy your settings and files. Click **Next**. The **What do you want to transfer** page appears, as shown.



This page lets you select settings only, files only, or both files and settings. Details of each option appear in the right pane.

- For the purposes of getting started with this wizard, select **Settings only** and click **Next**. The wizard scans your old computer and collects all of the settings you requested to migrate. This usually takes a few minutes, depending on the speed of your computer.
- When prompted, label and insert the removable media, or indicate the drive location you selected and click **OK**. If you are prompted, insert additional disks until the wizard completes.
- When the **Completing the Collection phase** page appears, click **Finish**.

Return to your new computer and continue with the wizard.

Step 3: Resume using the wizard on your new computer

You now return to your new computer with disks or the removable drive that holds your settings and files.

- The wizard you left running on your new computer should still be on the **Now go to your old computer** page. Click **Next**.
- When the **Where are the Files and Settings** page appears, select **Floppy drive or other removable media**, or select **Other** and browse to the drive location. Click **Next**.
- Insert the disks or indicate the drive location. Click **Next**.
- The wizard reads the collected files and settings and applies them to your new computer.
-

When all of the settings and files have been applied, the wizard will reach the **Finished** page. Click

Finished. For the changes to take effect, you are prompted to restart your computer.

[↑ Top of page](#)

4. Migrating using a direct connection cable

Another simple way to migrate files and settings is to use a direct cable that connects your computers via the serial ports. You will need a serial PC to PC file transfer cable, available from most computer stores. The process requires only two steps.

Step 1: First start the wizard on your new computer

1. Click **Start, All Programs, Accessories, System Tools, Files and Settings Transfer Wizard**. When the **Welcome to the Files and Settings Transfer Wizard** page appears, click **Next**.
2. Ensure **New Computer** is selected and click **Next**.
3. In the **Do you have a Windows XP CD?** page, select **I want to create a Wizard Disk** in the following drive: and click **Next**.
4. Insert a blank and formatted 3.5 inch floppy disk into your new computer's floppy drive. The wizard creates the disk and prompts you to go to your old computer.

Step 2: Starting the wizard on your old computer

1. Insert the wizard disk into your old computer.
2. When the **Welcome to the Files and Settings Transfer Wizard** appears, click **Next**.
3. When the **Select a Transfer Method** page appears, select **Direct Cable** and click **Next**.
4. When the **Set up your serial connection** page appears, complete the following steps:
 1. Connect your computers with a serial PC to PC file transfer cable.
 2. Go to the other computer and advance the wizard to the **Set up your serial connection** page.
 3. Click **Autodetect** on both wizards to select the serial port setting.
5. When the wizard shows a successful connection, click **Next**.

The wizard automatically transfers your files and settings to your new computer. You will need to restart your computer for the changes to take effect.

Note: Some settings may not be restored to your Windows XP-based computer. Settings for devices that are either not available on or incompatible with Windows XP will not be transferred. A list of files or folders that were not restored to their original locations appears on the **Completing the Files and Settings Transfer Wizard** page of the Files and Settings Transfer Wizard.

The following types of items may not be transferred:

- Third-party driver files for devices that are not installed on the Windows XP-based computer.
- Network printers that are not available on the Windows XP-based computer.

Related Articles

- [3 Signs You Need a New Computer](#)
-
-

Product Information

- [Windows XP Professional](#)
- [Features](#)
- [Compare Windows XP with your Version](#)

[↑ Top of page](#)

 Printer Friendly Version  Send This Content  Add To Favorites

How would you rate the usefulness of this content ?

1 2 3 4 5
 Poor Outstanding

Tell us why you rated the content this way. (optional)

[Manage Your Profile](#)

©2008 Microsoft Corporation. All rights reserved. [Contact Us](#) | [Terms of Use](#) | [Trademarks](#) | [Privacy Statement](#)